

103001
SECRET

TG 56

G-2

PRELIMINARY STUDY: ORDER OF BATTLE

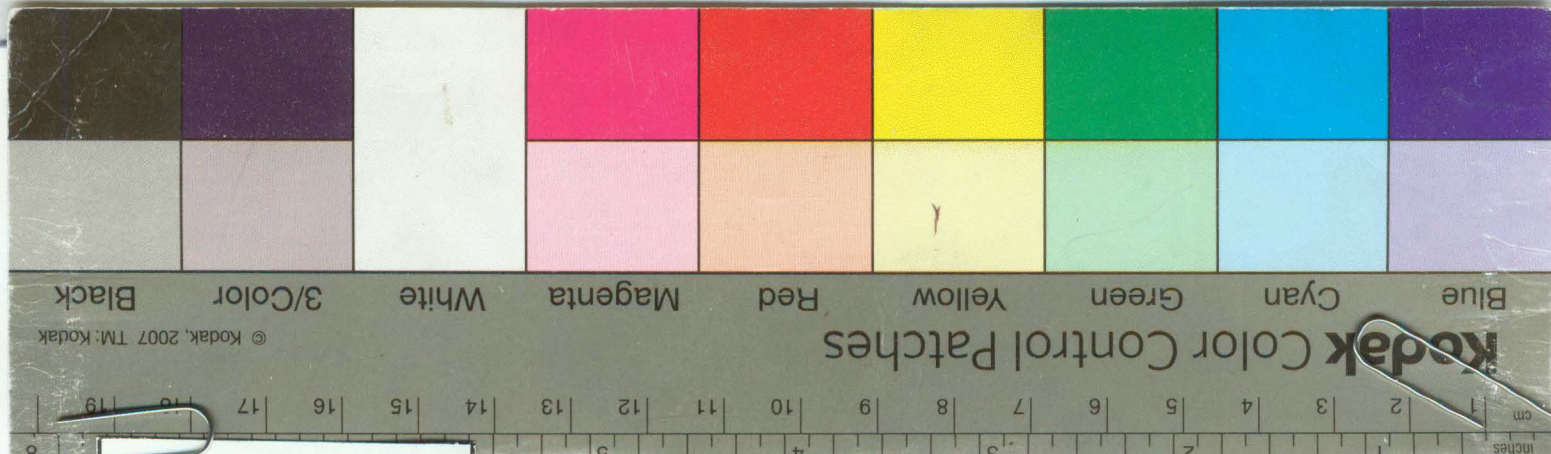
T I N I A N

Prepared by Language Personnel, ComGroup II, and ACofS, G-2, TG 56

This material is based on mutually-supporting documents captured on SAIPAN. The backbone of the defense appears to be a reinforced regiment, plus 2 probable infantry battalions with auxiliary units, plus naval ground troops and AA units. Units under 1 below were present as of 30 May, 1944. Weapons, where they are included, are from a TO of the same date. Personnel figures, however, are from the end of March, are incomplete, and must be considered tentative.

1. 50TH INFANTRY REGIMENT: CO, Col. Ogata (This is a regiment of the 29th Division of the 31st Army).

- | | | |
|----|----------------------------------------------------------------------------------------------------|----------------|
| a. | Headquarters | 73 men |
| b. | 1stBn, Inf. | . |
| | Hq. | 66 men |
| | 1stCo. | 143 men |
| | 2ndCo. | 143 men |
| | 3rdCo. | 144 men |
| | Bn Gun Unit | 83 men |
| c. | 2ndBn, Inf.
(same) | 579 men |
| d. | 3rdBn, Inf.
(same) | 578 men |
| e. | Bn Mt. Artillery | |
| | Hq. | 80 men |
| | 1stCo. (Btry) | 125 men |
| | 2ndCo. (Btry) | 126 men |
| | 3rdCo. (Btry) | 125 men |
| f. | Regimental Signal Co.
plus 1 radio squad, 29th
Div Signal Unit | 456
141 men |
| g. | Attached Tank Co. (from
18thRegt, 29thDiv.
Strength not given; prob.
120 men 15-16 tanks) | |
| h. | Engineer Co. | 169 men |
| i. | Supply Co. | 160 men |
| j. | Medical Unit | 203 men |



DECLASSIFIED
Authority NND 735017

RG Entry Stack Row Comp Shelf Box-Folder
407 427 270 55 24 3 7234-2

SECRET

PRELIMINARY STUDY: ORDER OF BATTLE T I N I A N

- k. 2nd Sec., 29th Div Hospital 249 men
- l. 1 platoon, 264th Independent Transport Co (strength not given; prob. 120 men)

Weapons (50th Regiment):

- 35 M100 Grenade discharger
- 35 M2 Grenade discharger
- 123 M "Juteki" prob. 50mm mortars
- 10 M97 mortars (81mm?)
- 118 M99 LMG's
- 18 M92 LMG's
- 6 M92 Inf. guns (70mm packs?)
- 2 M1 Mobile 47mm AA
- 6 M94 AA
- 12 M94 Mt. guns (75mm)
- 4 M100 Flame throwers
- 75 M92 Telephones
- 19 Radios

2. Two battalions, 18th Regiment, 29th Division and Auxiliary Units (not confirmed).

3. ~~56TH KEIBITAI (Naval Guard Force).~~

PRELIMINARY STUDY: ORDER OF BATTLE T I N I A N

- a. Coast defense units (strength unknown)
- b. AA units (strength unknown) 249 men
- c. Possible infantry units (strength unknown) and Transport Co (strength not given; prob. 120 men)
(One unit near TINIAN Town is numbered at 150 men)

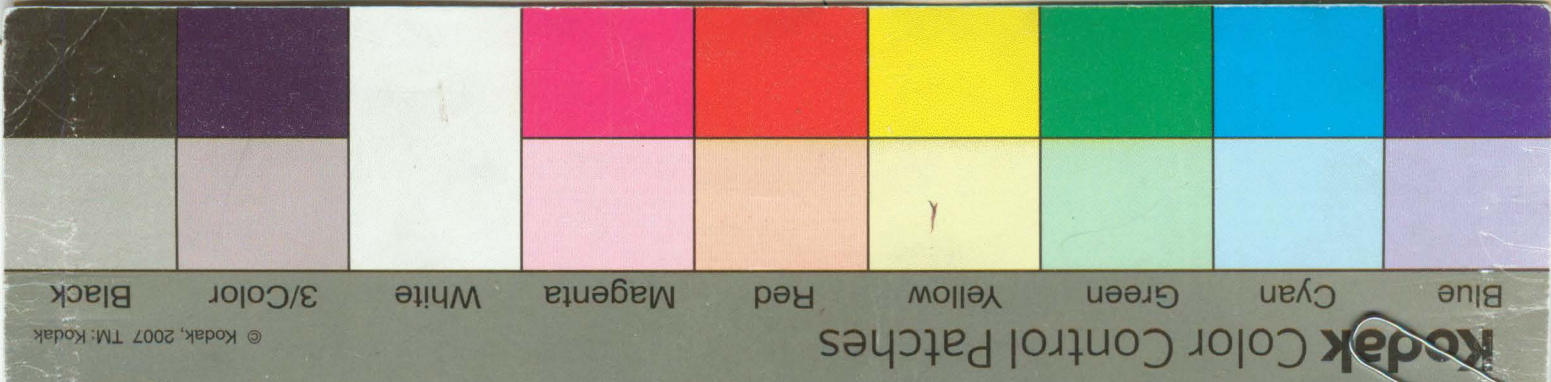
4. 233RD CONSTRUCTION BATTALION (no strength given; prob. 1000 men).

35 M100 Grenade discharger

(Note: An isolated captured map shows positions for the 1st Bn, 135th Regt. There is no reference to it in other documents; and it has been currently encountered on SAIPAN).

As of March 1944, there were 3188 Army troops on TINIAN, aside from the Tank Company and the Transport Platoon, which raised the total to roughly 3500. Recent evidence from HOMARE Headquarters in CHARAN-KANOA suggests that the 2 battalions of the 18th Regiment, previously that shipped to GUAM in early June, actually went to TINIAN. This would raise the total of Army troops present to a possible 4700-5000.

Not included in the above figure are KEIBITAI troops, which may run to 2000, nor Air personnel, nor the Construction Battalion. Units (not confirmed).



DECLASSIFIED
Authority NND 735017

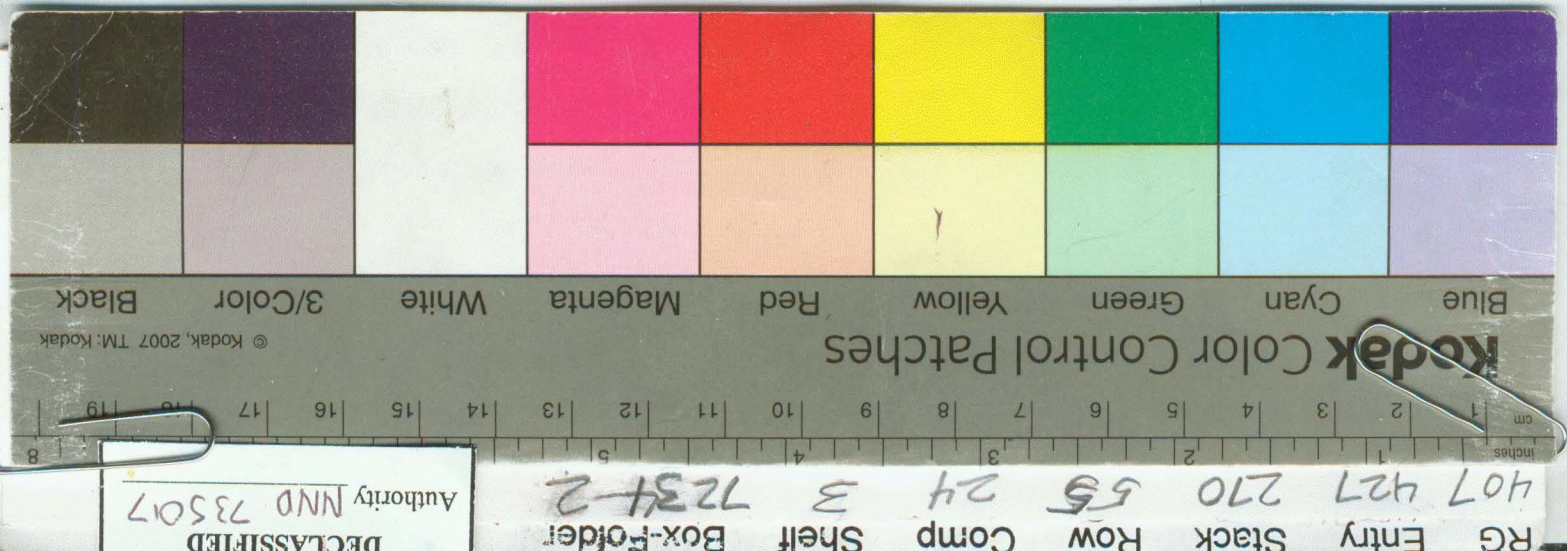
RG Entry Stack Row Comp Shelf Box-Folder
407 427 270 55 24 3 7234-2

SECRET

PRELIMINARY STUDY: ORDER OF BATTLE T I N I A N

An overall estimate of Naval and military personnel can be very tentatively set at 6700-7000, less thos who have been destroyed by BLUE gunfire and bombing.

There were about 18,000 civilians listed on TINIAN in a military survey, in March 1944.



Kodak Color Control Patches

© Kodak, 2007 TM: Kodak

Blue Cyan Green Yellow Red Magenta White 3/Color Black

RG Entry Stack Row Comp Shelf Box-Folder

407 427 270 55 24 3 7234-2

DECLASSIFIED Authority NND 735017

inches 1 2 3 4 5 6 7 8 9 10 11 12 13 14 15 16 17 18 19 8